

Schüco MPE Modules in the PS 14 Series

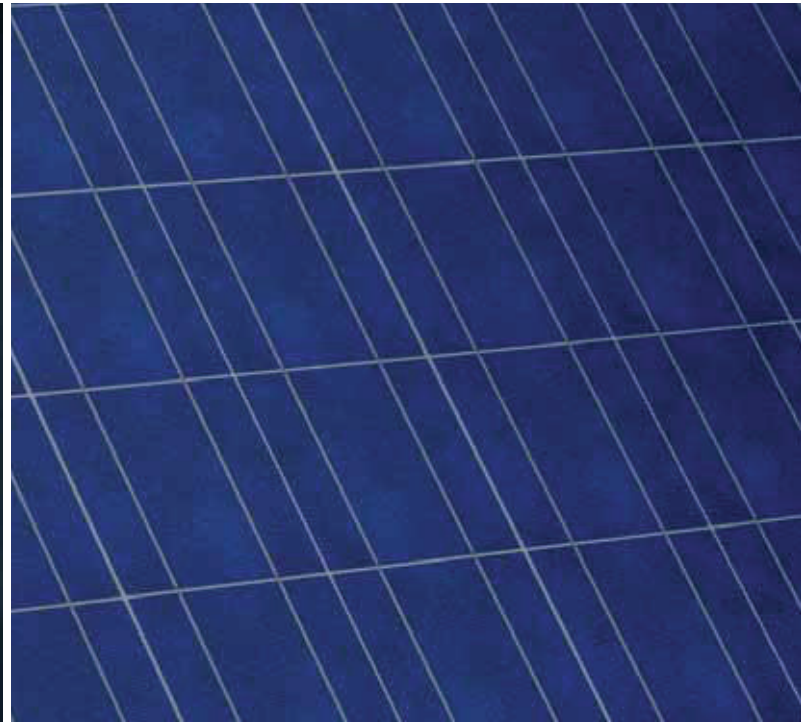
Technical Information for Performance Classes 220 - 235 W_p



Strathcona
Solar Initiatives



www.StrathconaSolar.com 613-354-6333



Durable and Economical Polycrystalline Modules
Schüco MPE Modules in the PS 14 Series are known for their rugged design and outstanding performance, making them a popular choice for both commercial and residential installations.

The production process for Schüco polycrystalline cells is more energy efficient than that of some other photovoltaic technologies, helping the earth and the bottom line. Starting with high quality materials, these modules are manufactured to a stringent specification, resulting in a sturdy product with optimized yields.

Schüco modules are designed to withstand a wide variety of weather extremes and manufactured to a strict set of quality standards. Performance data is measured prior to the module leaving the factory and labeled both on the backsheet and the module packaging, for a more convenient installation experience.

Schüco Canada is pleased to announce that modules of the PS 14 series are compliant with the Domestic Content Requirements of the Ontario Power Authority Feed-in Tariff Program.

Key Features

- High-efficiency polycrystalline cells provide advanced power output
- Comprehensive warranty ensures investment security and reliable system operation*
- Perfect for both commercial and residential applications
- Manufactured with high quality, robust materials
- Schüco racking systems are specially designed for Schüco modules, resulting in optimized PV package solutions

* In accordance with the warranty conditions of Schüco Canada, Inc.

Made in
Ontario 



Green Technology for the Blue Planet
Clean Energy from Solar

SCHÜCO

Schüco MPE Modules in the PS 14 Series

Technical Data

Photovoltaic modules				
Product name	MPE 220 PS 14	MPE 225 PS 14	MPE 230 PS 14	MPE 235 PS 14
Schüco article number	232 605	232 606	232 607	232 608
Cell type	poly			
Number of cells / cell arrangement	60 / 6 × 10			
Cell dimension	6" (156 mm)			
Module efficiency	13.7 %	14.0 %	14.3 %	14.6 %

Electrical specifications					
STC rated output (P_{mpp})	220	225	230	235	W_p
Output tolerance STC (ΔP_{mpp})	+5 / -0				%
Warranted power output STC ($P_{mpp \min}$)	220	225	230	235	W_p
Rated voltage (V_{mpp})*	29.2	29.4	29.6	29.8	V
Rated current (I_{mpp})*	7.53	7.65	7.78	7.90	A
Open circuit voltage (V_{oc})*	36.6	36.7	36.8	36.9	V
Short circuit current (I_{sc})*	8.09	8.19	8.34	8.46	A

Electrical specification parameters		
Temperature coefficient α (P_{mpp}) ¹⁾	-0.43	% / °C
Temperature coefficient β (I_{sc}) ¹⁾	+0.065	
Temperature coefficient (V_{oc}) ¹⁾	-0.34	
Temperature coefficient δ (I_{mpp}) ¹⁾	+0.065	
Temperature coefficient ϵ (V_{mpp}) ¹⁾	-0.34	
Normal Operating Cell Temperature (NOCT) ²⁾	113 ± 5.4	°F
	45 ± 3	°C
Maximum system voltage USA NEC	600	V
Max. series fuse rating	15	A

Mechanical specification	
Frame technology	Aluminum frame, silver
Compound	Glass / EVA / backsheet
Weight (module only)	44.1 lbs (20 kg)
Outer dimensions	64.5 × 38.7 × 1.57 in 1638 × 982 × 40 mm
Cable length / diameter	37.4 in ± 1.97 in 950 mm ± 50 mm
Connector type	Schüco MC-T4 compatible
Packing unit	2 modules
Weight of packing unit	90.4 lbs / 41 kg

Qualification and warranties	
Product standard	cUL listed
Extended product warranty ³⁾	5 years
Output warranty of 90% performance P_{mpp} (STC) ³⁾	12 years
Output warranty of 80% performance P_{mpp} (STC) ³⁾	25 years

¹⁾ Irradiance 1,000 W/m², air mass index 1.5, cell temperature 25°C (77°F)

²⁾ Irradiance 800 W/m², wind speed 1 m/s, ambient temp. 20°C (68°F)

³⁾ In accordance with the warranty conditions of Schüco Canada, Inc.

